



# 44 OPEN

ALL YOUR DREAMS ON BOARD



# COMFORT

A UNIQUE LIVING SPACE

A design focused on functionality combined with spaces, built around a central living element which reinvent conviviality on board. The multifunctional work surface creates the link between the different living areas and naturally becomes the heart of the boat. A sense of details and the ergonomics have been used to optimize the circulation on board and to preserve the right balance between the interior and the exterior.





# PERFORMANCE

A DYNAMIC DESIGN,  
A MARKER OF RECOGNIZED PERFORMANCE

Marc Lombard and his team have done a pure synthesis of Nautitech DNA to offer a unique sailing experience. The design is enhanced thanks to the subtle match between the hull and the roof lines.



Narrow water entries, hull chines and forward rake of the reversed bows are the key points of this 44 Open, offering a perfectly balanced catamaran. The helm stations have been designed to integrate all the functions necessary for navigation while fitting perfectly into the contemporary style of the boat. For greater comfort and safety, all maneuvers are made from the cockpit.





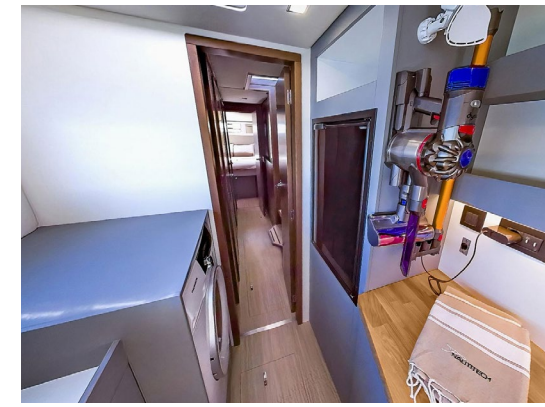
With family, friends or in couple, the spaces are designed to enjoy every moment of the day and offer a unique travel experience. The modularity and variety of equipment on board offer the possibility to configure this catamaran according to each program.



# LIFESTYLE

SPACES MADE FOR YOUR TRAVEL DREAMS





Laundry room, workshop, storage space... My SmartRoom® offers you everything in the same place. By replacing the starboard forward cabin with this multifunctional space, free your mind from space constraints and take on board all the equipment you need to live far away adventures. Enhance this space with our washing machine and freezer options, for even more comfort and convenience.



# SMARTROOM

A UNIQUE SPACE DESIGNED FOR FREQUENT TRAVELERS





## TECHNICAL DATAS

Length overall	13,30 m / 43'8"
Beam overall	7,36 m / 24'2
Draft	1,45 m / 4'9"
Displacement (mLC)	10,9 t / 24 035 lbs
Engine type	Diesel, Saildrive
Engines	2 x 30 hp Volvo Penta
Fuel capacity	2 x 250 L / 2 x 66 us gal
Fresh water capacity	2 x 300 L / 2 x 79 us gal
Cabins	2 to 4
Berths	4 to 8
Mainsail	75 m <sup>2</sup> / 807 sq ft
Self-tacking solent	30m <sup>2</sup> / 323 sq ft
Architect and exterior design	Marc Lombard Yacht Design Group
Interior design	Chedal Anglay



Video tour





# AWARDS

A UNIQUE CATAMARAN

## Best Boat 2023 by SAIL Magazine

The 44 Open has been elected in the SAIL Magazine Top 10 Best Boats for 2023!

Each year SAIL Magazine's boat reviewers spend weeks discovering new boats, talking to shipyards, examining boats closely at the dock, and finally, sailing them. The announcement of the winners takes place during the U.S Sailboat show in Annapolis, where the jury meets and makes its final assessments of the boats that win top honours.

Thus, the 44 Open has been designated as one of the 10 Best boats of the year 2023.

## EUROPEAN YACHT OF THE YEAR 2023 in the Multihull category

The jury decided to merge the «Cruising Multihulls» and «Performance Multihulls» categories, so it is against 6 other models that the 44 OPEN stood out for her exceptional sailing performance and her unequalled level of finish.

"I consider this 44 Open to be the perfect size for travelling, with good performance, a reduced draft and room for family and friends. The interior design is smart and welcoming, not as bulky as her competitors but certainly enough to prove very comfortable at anchor. Of all the multihulls on which I had the chance to sail in 2022, this is certainly the one that made the strongest impression on me." Toby Hodges, Yachting World (United Kingdom).

The work of a whole team has been rewarded in 2023. This is the result of a dynamic collaboration between the different departments of Nautitech and our partners, including our architect Marc Lombard Yacht Design Group and our designer Chedal-Anglay Design.





# NAUTITECH

MAKE  
EXCELLENCY  
YOUR STANDARD

## NAUTITECH CATAMARANS: THE PERFECT BALANCE BETWEEN PERFORMANCE AND COMFORT

My relationship with NAUTITECH CATAMARANS, started in 2009 with the design of the Nautitech 54'. The brief was to create the perfect balance between performance and comfort, for private customers who are keen sailors but want the comforts of modern living too. We also wanted to appeal to sailors who charter a yacht, but do not want it to just be a floating caravan. What I mean by «performance» is genuine sensations at the helm, good top speed when conditions are favourable, and more specifically, high average speed upwind and downwind, without forgetting the important aspect of the time spent motoring, which is frequent with long-distance cruising. And all this without ever having to worry about safety in family navigation conditions. On deck everything is designed to be simple and reliable, easy to be manoeuvred by a reduced crew.

**Marc LOMBARD**  
Naval Architect

---

## A LONG-TERM VISION PROMOTING EXCELLENCY

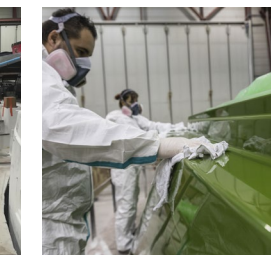
Running a successful shipyard is a dream come true for the team behind NAUTITECH CATAMARANS. Passion for the sea and shipbuilding is shared throughout every department, and this passion is a fundamental foundation for our company. We believe that navigation must be at the heart of a multihull's DNA. While the current market trend increasingly promotes the catamaran experience as a static one, we design boats that are remarkable when stationary and when blue water cruising. Our customers expect us to be able to sail by maximizing their experience on the water as well as the sensations felt. It is therefore imperative for us to project the future of our catamarans in solutions combining ease of use, comfort in navigation, performance, safety in all wind conditions.

**Gildas LE MASSON**  
CEO



## THE BRAND

It is in Rochefort sur Mer, the very cradle of shipbuilding and naval architecture and birthplace of Pierre Loti, that NAUTITECH CATAMARANS has anchored its activity of construction of luxury catamarans. Anyone familiar with the world of multihulls can quickly appreciate the innovative nature of NAUTITECH CATAMARANS, the first manufacturer to understand and define the very spirit of a catamaran. Nautitech were also the first to propose the concept of open living onboard, that combines the saloon and cockpit into one spacious, functional living area. Understanding how important sensations at the helm are to their customers, NAUTITECH CATAMARANS places equal emphasis on sailing ability and comfort.







[www.nautitechcatamarans.com](http://www.nautitechcatamarans.com)